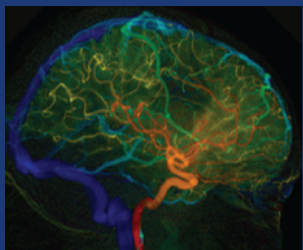


Bouncing-back after acute stroke

Wim Saeys MSc, PhD, neurorehabilitation
University of Antwerp, department REVAKI
Rehabilitation Hospital Revarte



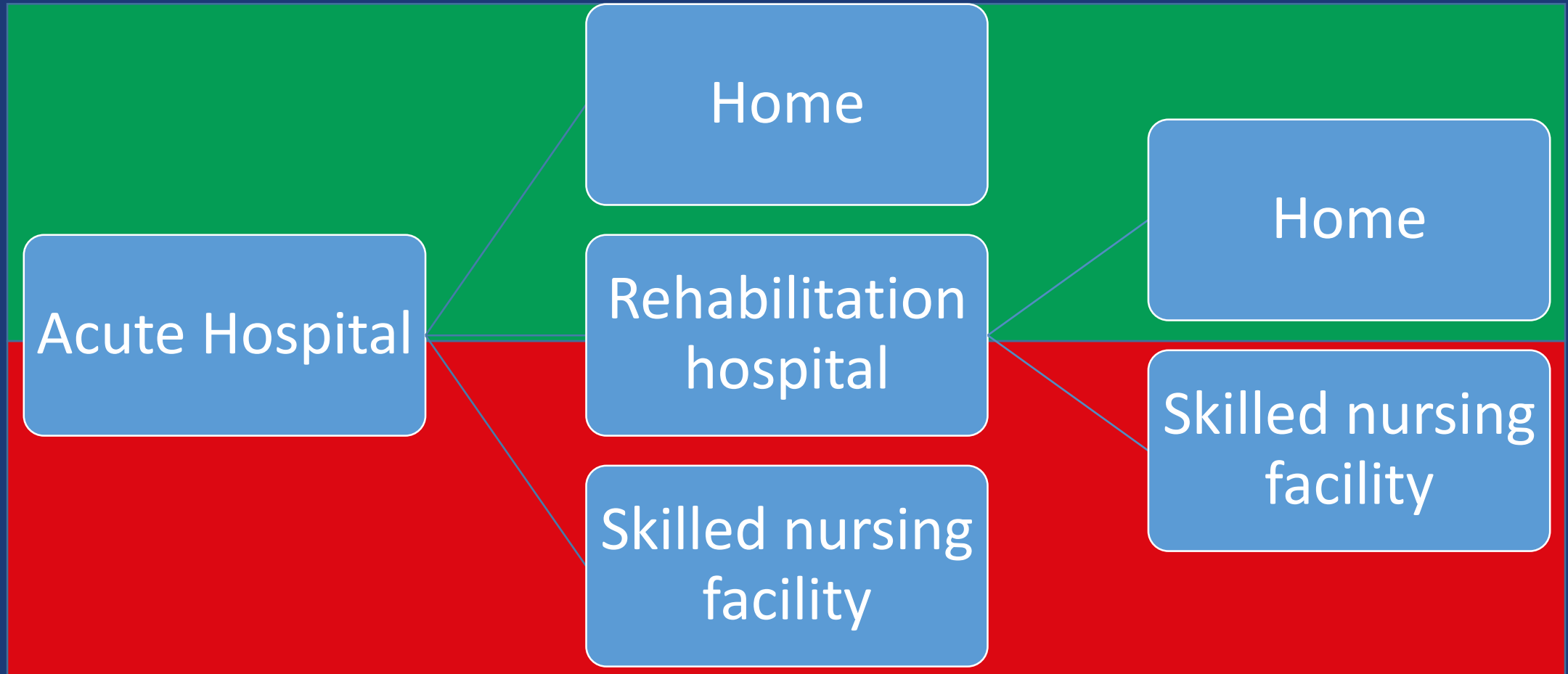
ACUTE BEROERTEZORG IN MULTIDISCIPLINAIR PERSPECTIEF
17 november 2018



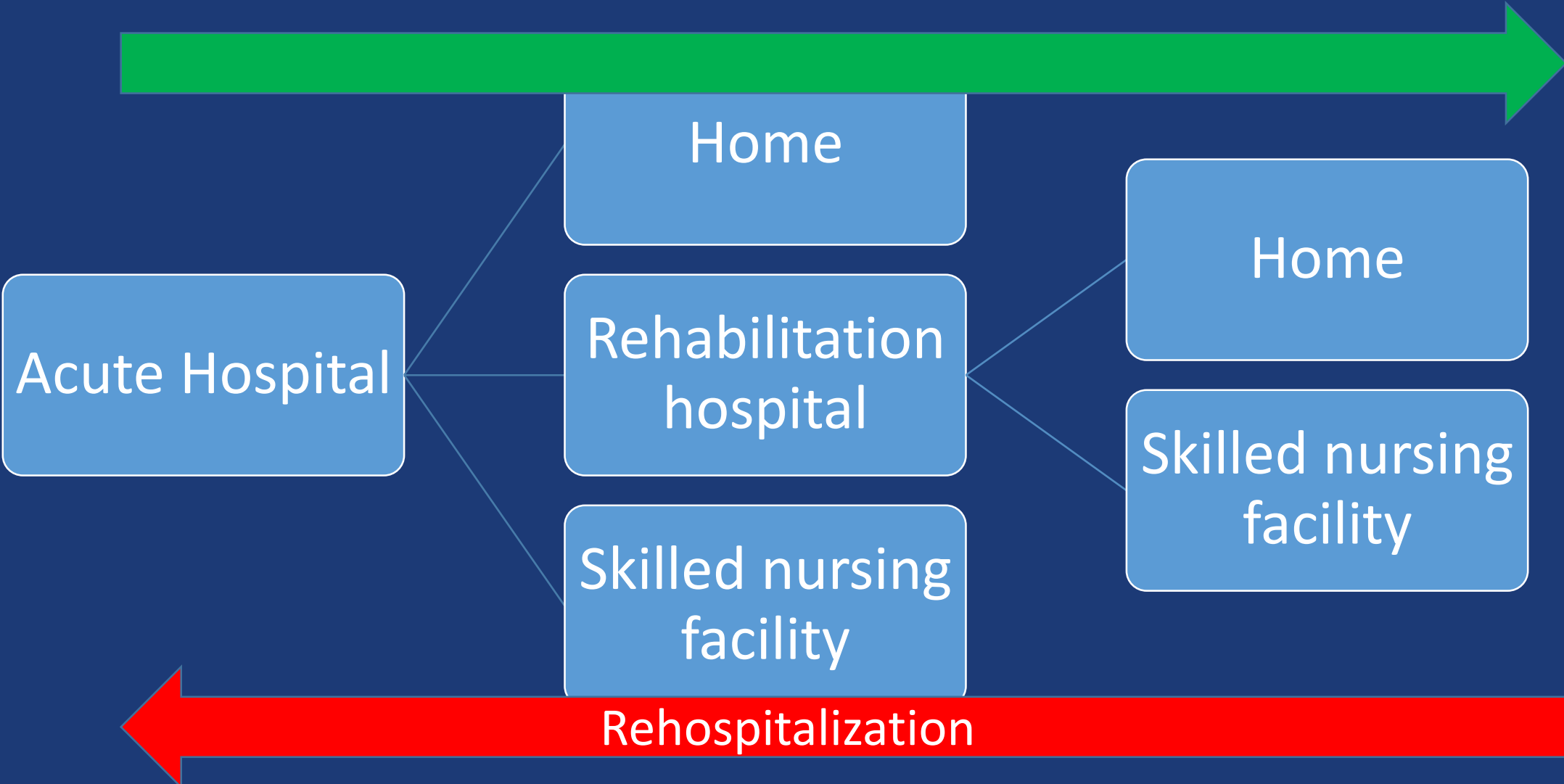
Institutional patient flow



Institutional patient flow



Bounce-back phenomenon



Bounce-back phenomenon

- Two ways to consider “bouncing back”

Movements from a less intense to a more intense care setting

Acute hospital
Emergency room
Skilled nursing facility
Long-term care
Rehabilitation facility
Home with health care
Home without health care



Functional decline at the community participation level

- Social roles
- Employment
- Social activities (restaurant, going out)
- Sports/hobby's
- Community ambulation
- Overall independence in daily live activities

Bounce-back phenomenon

- Two ways to consider “bouncing back”

Movements from a less intense to a more intense care setting

Acute hospital
Emergency room
Skilled nursing facility
Long-term care
Rehabilitation facility
Home with health care
Home without health care



Functional decline at the community participation level

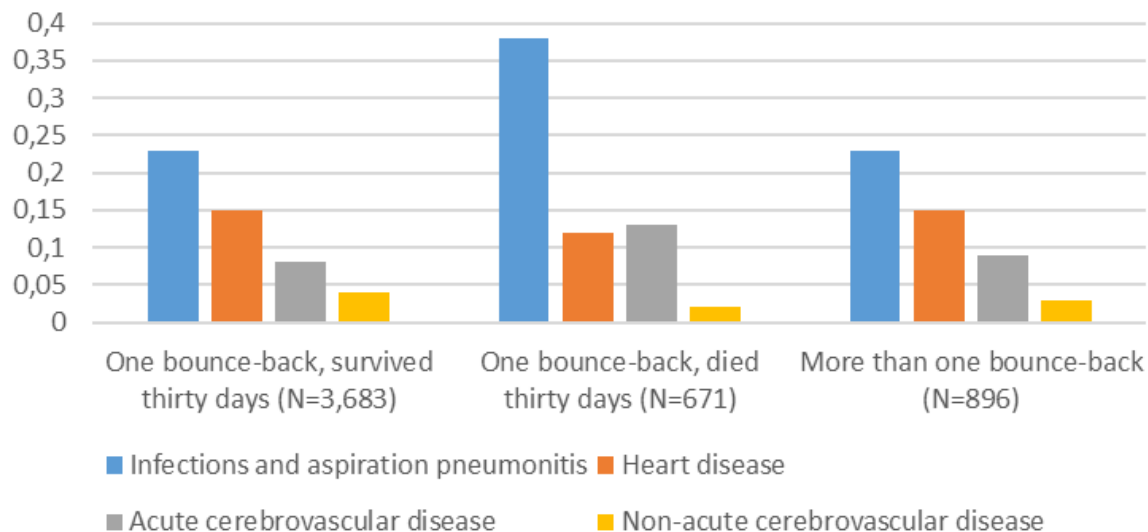
- Social roles
- Employment
- Social activities (restaurant, going out)
- Sports/hobby's
- Community ambulation
- Overall independence in daily live activities

Bounce-back phenomenon

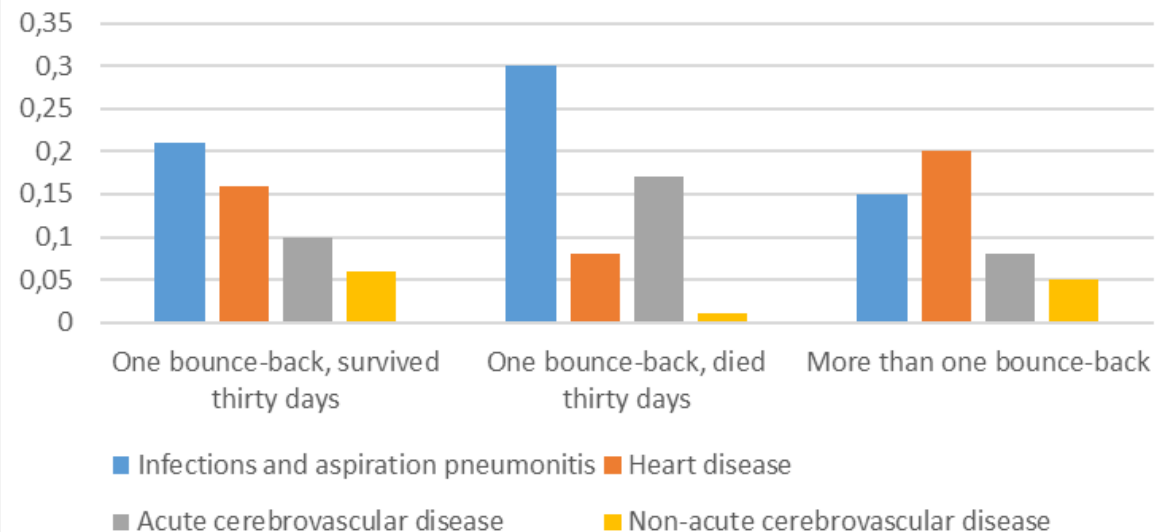
- Patients with **complex chronic health conditions** like acute stroke often require **care across multiple settings** and **experience numerous care transitions**
- Stroke patients are at especially high risk for bouncing-back with **20% of acute stroke patients experiencing at least one bounce-back** and **16% of those experiencing more than one bounce-back** within **thirty days of hospital discharge**

	One bounce-back, survived thirty days (N=3,683)	One bounce-back, died thirty days (N=671)	More than one bounce- back (N=896)
Sociodemographic			
Age (in years)	80(7)	83(8)	81(7)
Caucasian (%)	79	82	74
African American (%)	16	13	21
Index hospitalization			
Acute hospitalization LOS (days)	6.83(5.45)	8.64(6.41)	7.59(5.72)
Discharge to			
Home with home health (%)	24	11	25
Rehabilitation center (%)	26	18	17
Skilled nursing facility (%)	50	71	58
Prior medical history			
Fluid and electrolyte disorders (%)	30	33	35
Hypertension (%)	76	71	78
Congestive heart failure (%)	31	39	31
Chronic pulmonary disease (%)	22	30	25
Disease severity			
Mechanical ventilation (%)	2	5	3
Gastrostomy tube (%)	12	29	15
Key characteristics of rehospitalized acute stroke patients, by bounce-back category (N=5,250); all variables p<0.05			

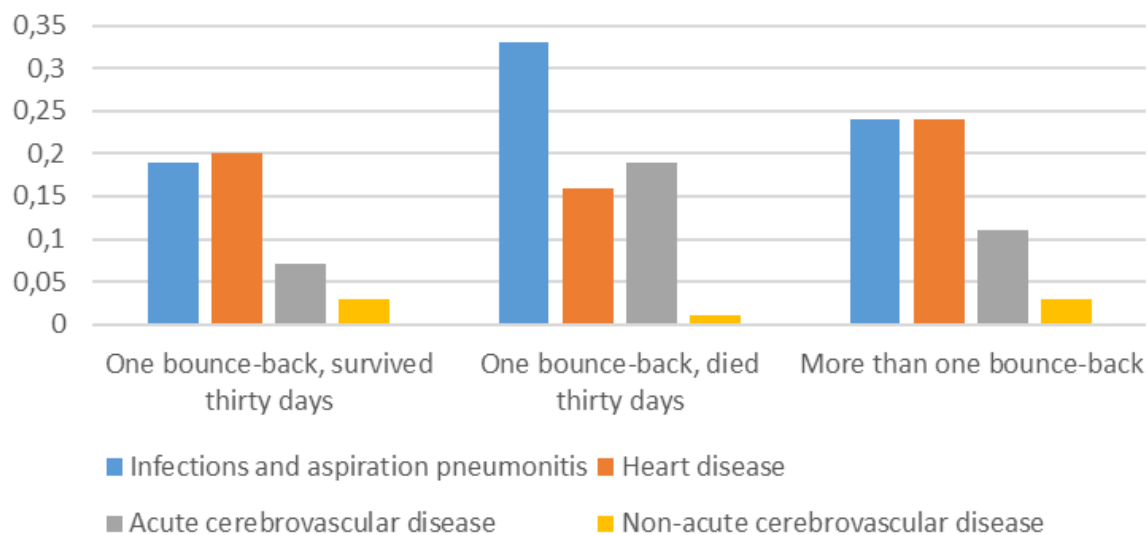
Adjusted probability First hospitalization N=5,250



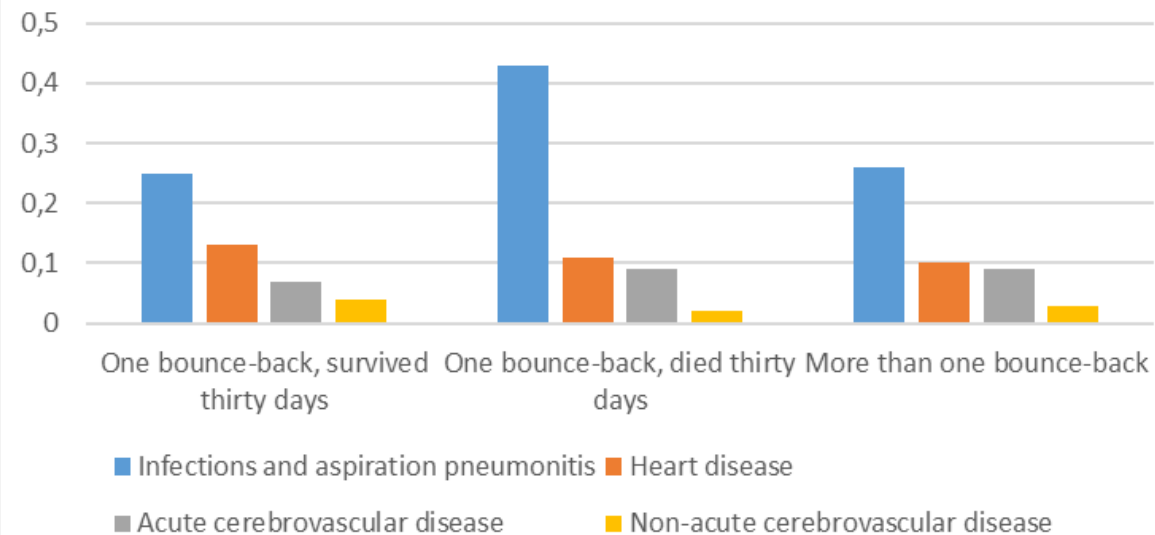
Adjusted probability Discharge home with home health care N=1,187



Adjusted probability Discharge to rehabilitation center N=1,230



Adjusted probability Discharge to skilled nursing facility N=2,833



The price of bouncing-back

One year mortality and payments for acute stroke patients with thirty day bounce-backs (N=11,729)

- One year survival
 - 83% of the zero bounce-back group
 - 67% of the one bounce-back group
 - 55% of the two or more bounce-back group
- Zero bounce-back group survived
 - 1.96 times as long as the one bounce-back group
 - 3.13 times as long as the two or more bounce-back group

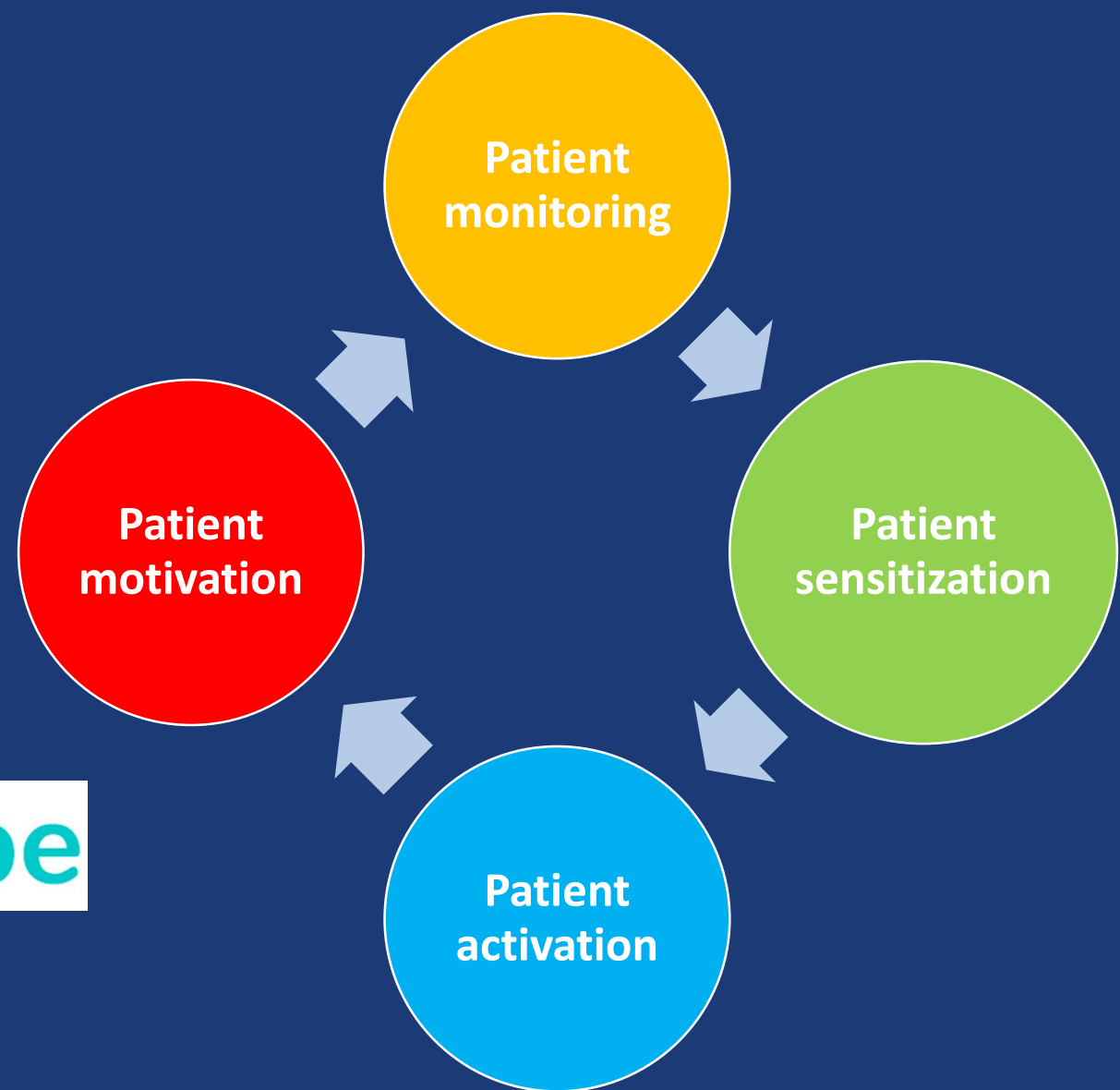
The price of bouncing-back

One year mortality and payments for acute stroke patients with thirty day bounce-backs (N=11,729)

- Health care payments (in one year)
 - Zero bounce-backs: between \$1,667 - **\$35,854**
 - One bounce-back: between \$2,726 - \$45,404
 - Two or more bounce-backs: \$3,753 - **\$53,766**
- Outer bounds 50% absolute increase

Possible actions?

- Secondary prevention
- Integrated transdisciplinary care

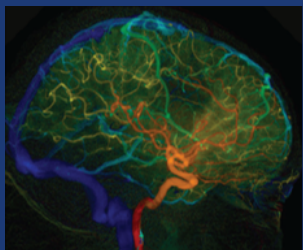
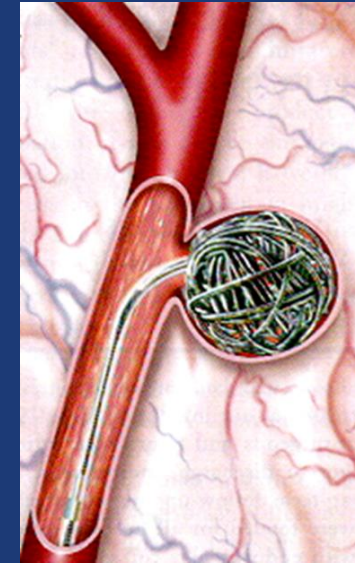
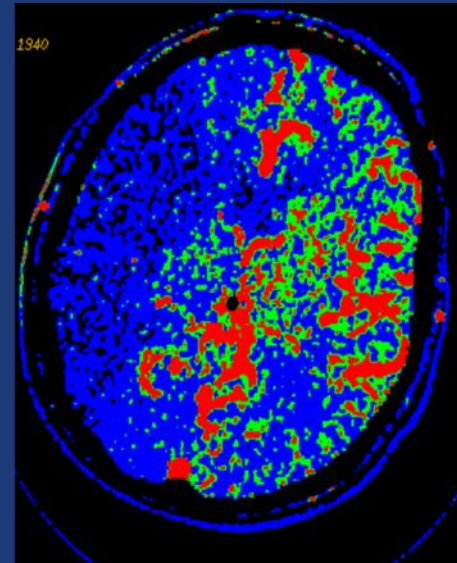
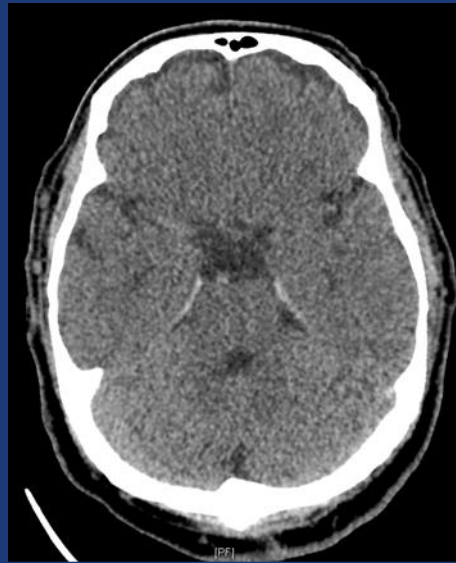
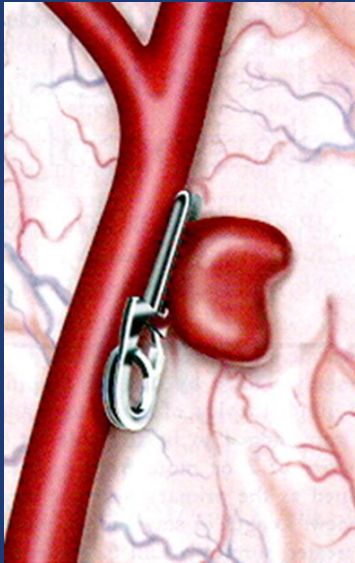


 **beroertecoach.be**



Hartelijk dank

wim.saeys@uantwerpen.be



ACUTE BEROERTEZORG IN MULTIDISCIPLINAIR PERSPECTIEF
17 november 2018

