

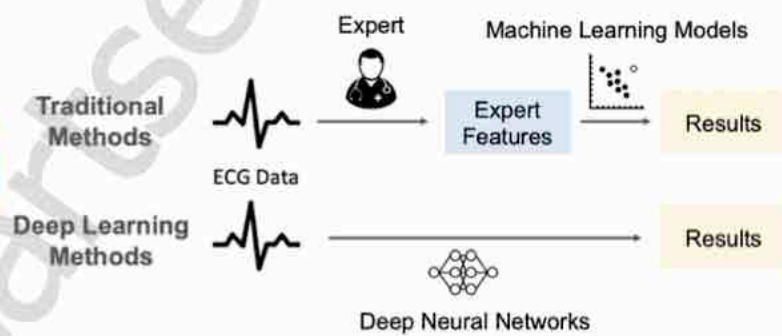
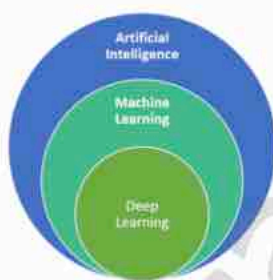
Huisartsensymposium 2023
Universitair Cardiologisch Netwerk Antwerpen (UCNA)

ARTIFICIELE INTELLIGENTIE IN DE DETECTIE VAN RITMESTOORNISSEN

DR. SOPHIE VAN MALDEREN
AZ MONICA



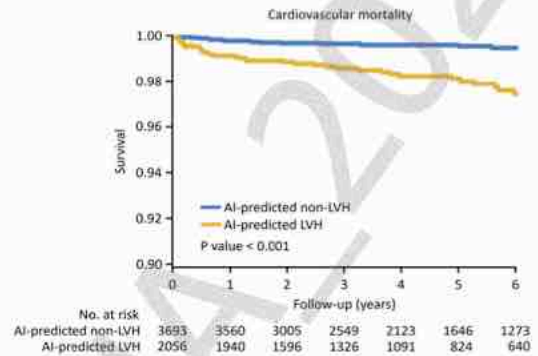
AI : Machine Learning en Deep Learning



arXiv:2001.01550v3

Doel AI

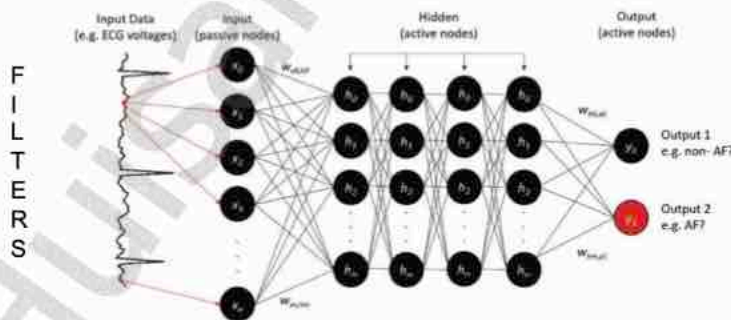
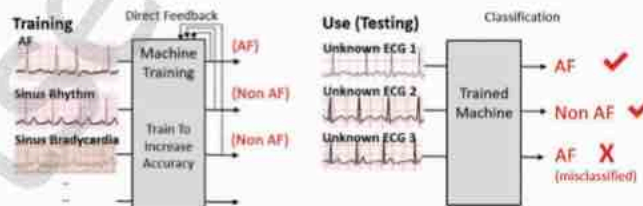
- Ondersteunen arts
- Verbeteren diagnostiek
- Vroegtijdige detectie
- Voorkomen/uitstellen van symptomen
- Tijdig opstarten therapie
- Predictie tool : VKF, LVH, HF ...
-> daling mortaliteit, hospitalisatie



Chih-Min L. et al. HeartRhythm 2022.

Neural networks trainen voor ECG analyse

ECG Input:
Databases (PhysioNet)
Output gekend + feedback



Cave: menselijke fout (labels)
-> foute conclusie

Krittanawong et al. Eur.Heart J 2019.

Ⓜ Nieuwe uitdaging

'Wearables', ambulante (ECG) registraties

Dr Holter



Ⓜ mHealth (mobiele gezondheid)

WGO: 'medische praktijk en tool voor volksgezondheid gedragen door mobiele medische hulpmiddelen zoals een mobiele telefoon, ... en andere draadloze toestelletjes.'



Apple Watch

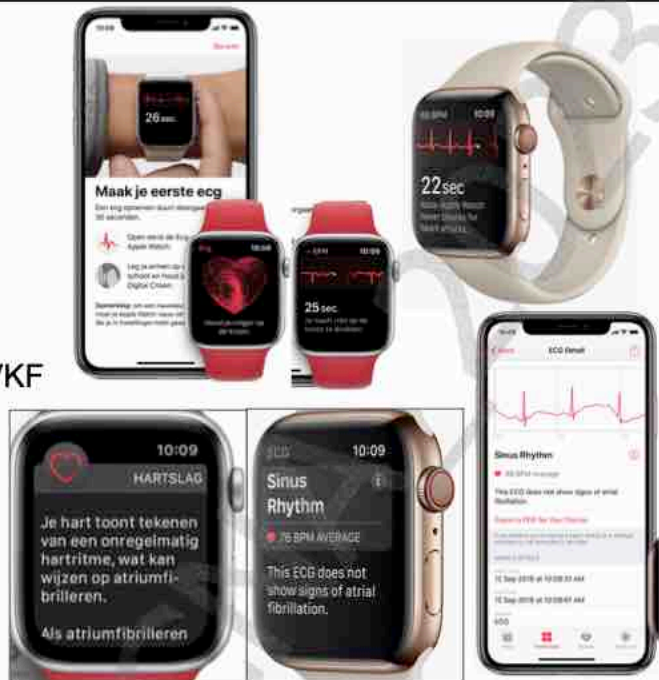
Apple Heart Study

Vinger op digital crown




1-afleiding ECG

Melding bij onregelmatig ritme/VKF

Sens 98.3%, spec 99.6%



Turakhia. et al. Am Heart J. 2021

new Series 8	new SE	new Ultra
 Blood Oxygen app ¹² ECG app ¹³ High and low heart rate notifications ¹³ Irregular rhythm notification ¹⁴ Cardio fitness notifications	 — High and low heart rate notifications ¹⁴ Irregular rhythm notification ¹⁴ Cardio fitness notifications	 Blood Oxygen app ¹² ECG app ¹³ High and low heart rate notifications ¹³ Irregular rhythm notification ¹⁴ Cardio fitness notifications

Kardia (AliveCor)



Free App



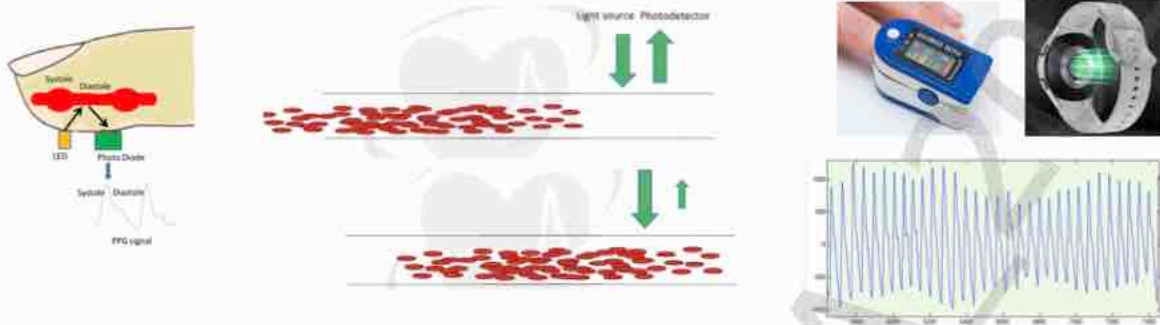
Instant results



KardiaMobile Card



Photoplethysmography (PPG)



Pulse palpation	Smartwatch PPG	Smartphone PPG	Handheld ECG	Smartphone ECG	Smartwatch ECG
Sens 94 Spec 72	Specify 84*	Sens 93-7 Spec 94-8	Sens 94-100 Spec 90-96	Sens 98 Spec 97	Sens 93 Spec 84
ECG confirmation needed			ECG confirmation not needed		

Adjusted from Jungquist et al. BMJ 2018
* Presentation ACC 2019

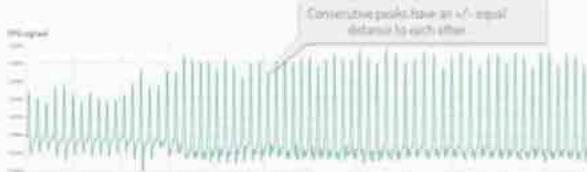
FibriCheck

The FibriCheck app interface includes the following screens:

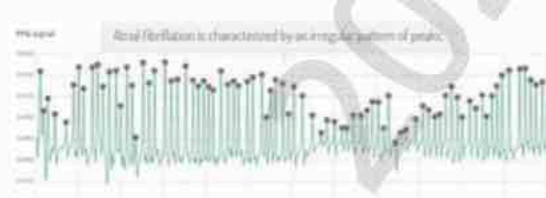
- Home Screen:** Displays a pulse sensor and a 'FibriCheck' logo.
- Check Screen:** A symptom checker with a grid of smiley faces and a list of symptoms: No symptoms, Light-headed, Confused, Nausea, Palpitations, Chest Pain, Shortness of Breath, Other.
- Records Screen:** Shows a list of ECG records with heart rate and rhythm indicators.
- ECG Analysis Screen:** Displays an ECG waveform and a 'NORMAL' status.

FibriCheck: 60 sec PPG signaal

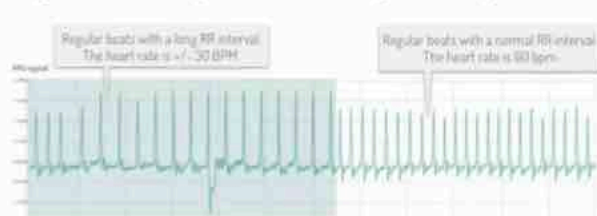
Regular heart rhythm



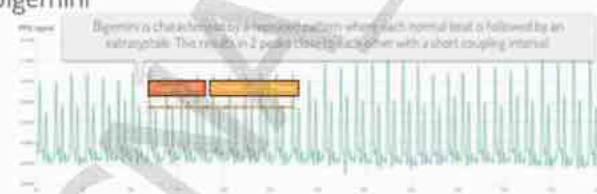
Atrial fibrillation



Regular heart rhythm with bradycardia episode



Bigemini



Remote monitoring





Ethiek



- 'Ontmenselijken' van geneeskunde versus **meer tijd** voor ander patiënten contact
- 'Black box' : ML nog te begrijpen, DL te complex...
Cave : wat bij verkeerde 'AI beslissingen' in kritische setting ?
-> Vertrouwen in systeem dat niet begrepen wordt door arts ?
-> oog van de expert blijft noodzakelijk
- Privacy en bescherming persoonlijke gegevens
- Transparantie
- Verantwoordelijkheid
- Toestemming



Conclusie



Vervangt arts niet !

- > Extra tool ter verbetering diagnostiek, risicostratificatie, preventie
- > Neemt taken over
- Nieuwe uitdaging : implementatie van data via o.a. 'wearables'
- Patienten zijn zelf meer betrokken.
- Kan deels de klassieke in-office raadpleging vervangen (remote monitoring)
- Ethiek



Huisartsensymposium 2023
Universitair Cardiologisch Netwerk Antwerpen (UCNA)

VRAGEN ?

Huisartsen_UCNA_2023