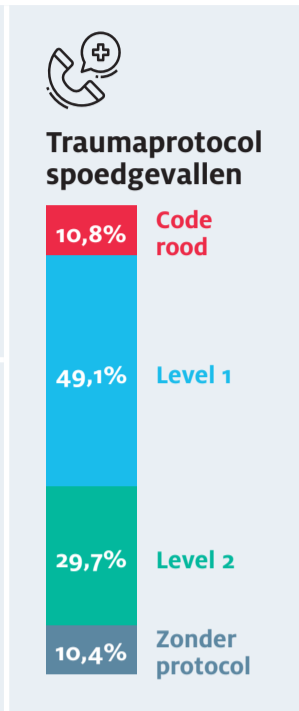
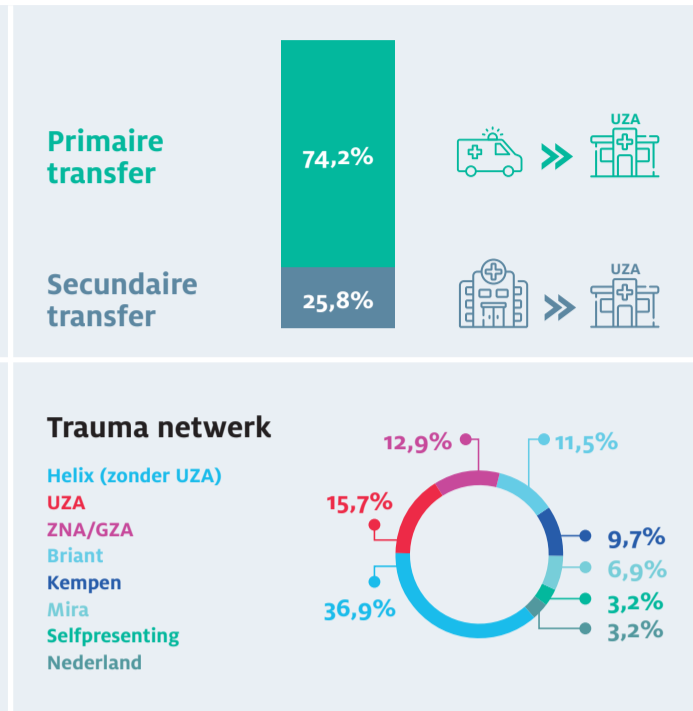
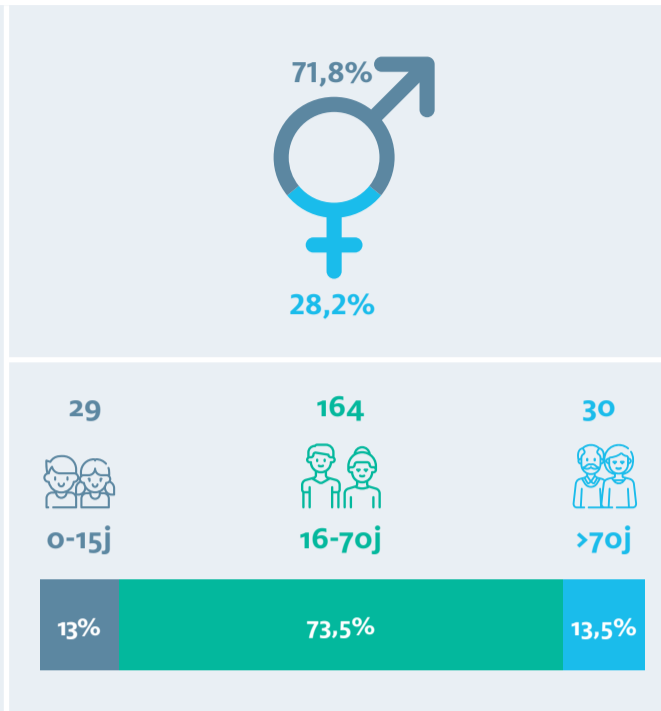
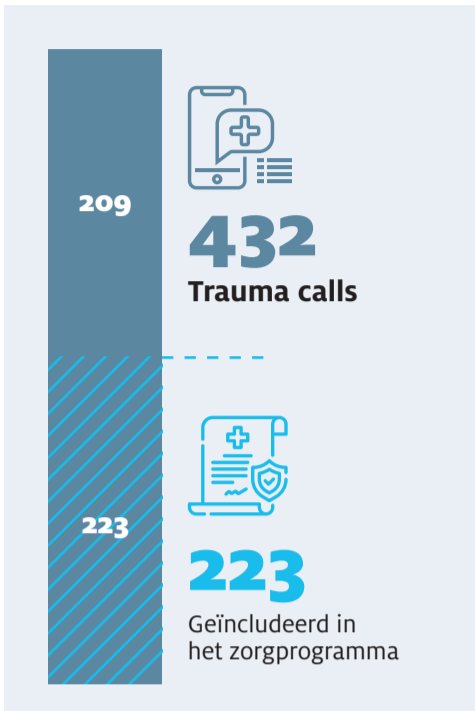
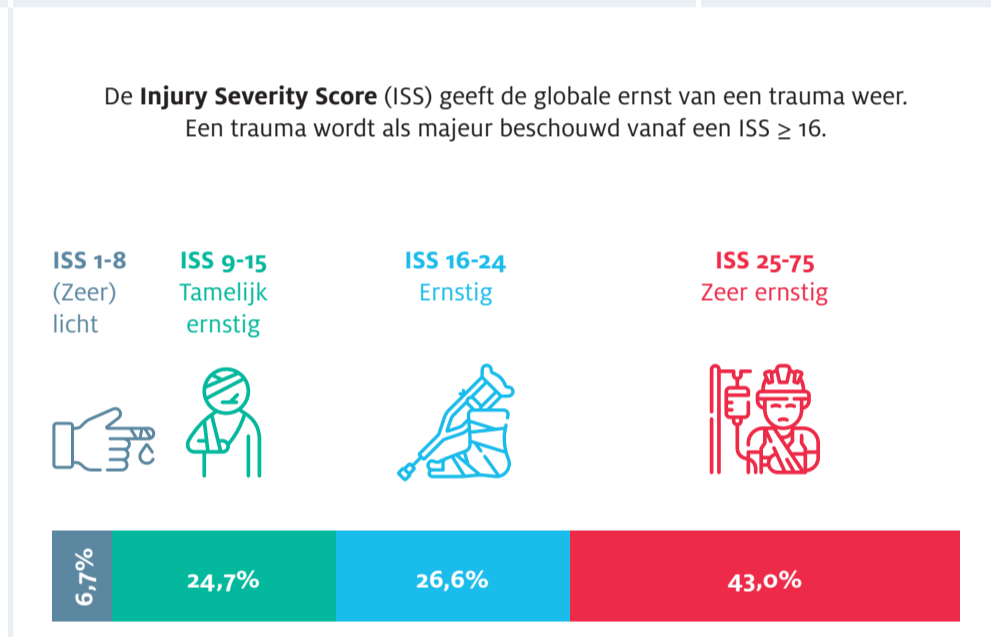
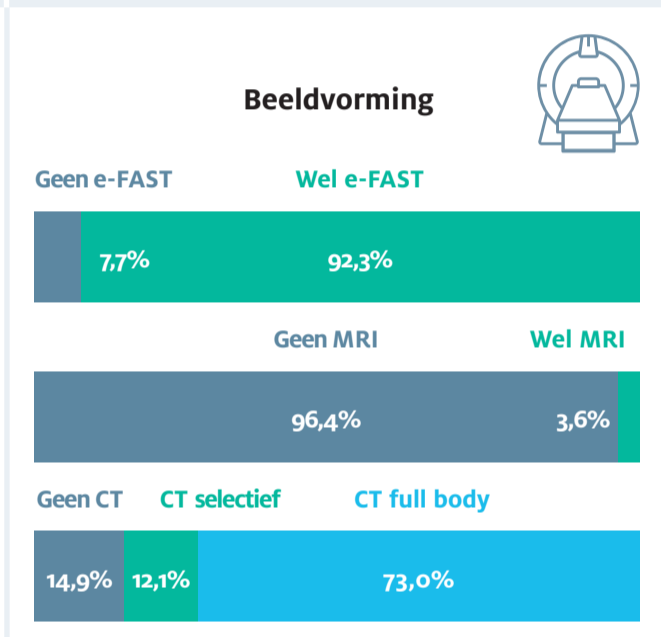
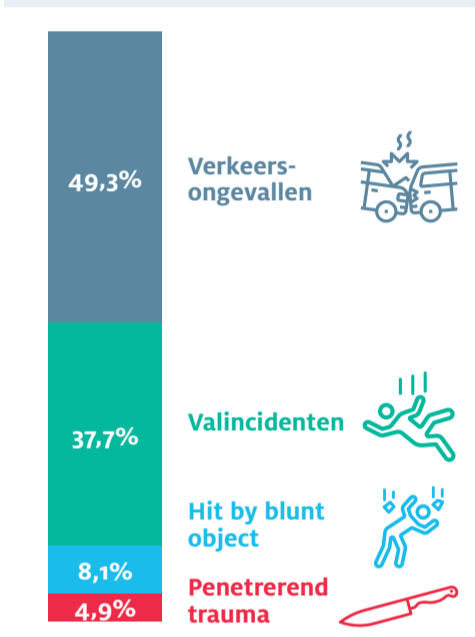


MAJOR TRAUMA SERVICE 2021

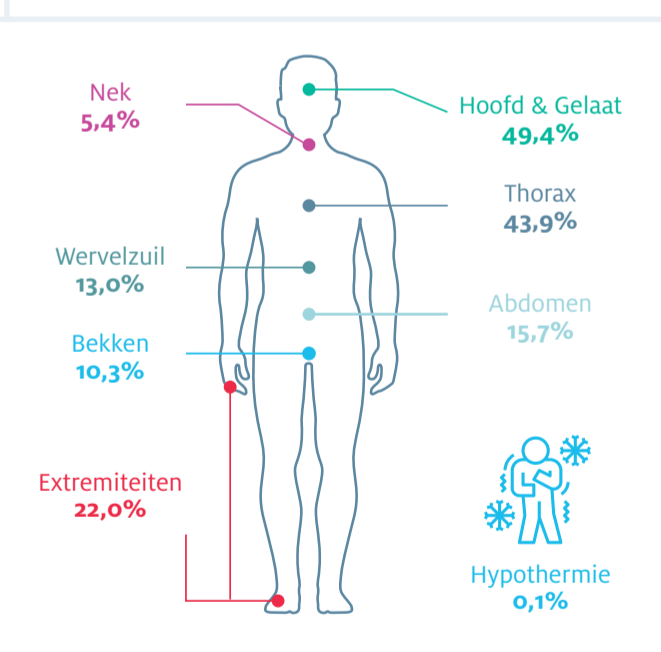
POPULATIE



LETSELS



Letselernt wordt per lichaamsregio bepaald volgens de **Abbreviated Injury Scale (AIS)**. Een letsel wordt als majeur beschouwd vanaf een AIS ≥ 3 .



Urgente ingreep < 2u na acute opvang

Urgente ingreep < 2u na acute opvang	Aantal
Externe fixatie extremiteiten	27
Liquordrainage/decompressie	25
Externe fixatie bekken	11
Laparotomie	11
Thoracotomie	5
Embolisatie	5
Revascularisatie	4
Laminectomie	4
REBOA	3
Dermatofasciotomie	2

OUTCOME

Length of stay (LOS)

	Gemiddeld	Range
Intensieve zorg LOS	6,7 dagen	1-75
Medium care LOS	2,4 dagen	1-8
Totale opname LOS	22 dagen	1-125

